



PTH 1400/1000 M



Drum chippers **PTH** Series

*Whatever wood,
the best chips*

GREENLINE

PTH 1000/1000
PTH 1200/1000
PTH 1400/1000



PTH 1200/1000 G

PTH 1000/1000
PTH 1200/1000
PTH 1400/1000

Heavy-duty machines within the Pezzolato line of drum chippers, to chip big diameter logs, their drum diameter measures 1000 mm.

The feeding mouth and the drum width distinguish the two models.

Able to produce 220 up to more than 300 m³ chips per hour, they guarantee high throughput.

Powered by tractor Power Take Off or provided with autonomous diesel engine.

Thanks to the closed drum, they produce high quality chips, whatever wood is cut, considerably reducing fuel consumption.

The sharp cut through the blades and the large drum's inertia reduce the machine's efforts and stress, thus confirming the well-known solidity of Pezzolato drum chippers.

The wear spare parts of all machines are cost effective and simple to replace in short maintenance times and cheap.

The integrated computer suggests any ordinary and extraordinary maintenance operations to be performed according to the manufacturer's maintenance plan.



Driven by PTO tractor and integrated C-shaped wood splitter



Stagger sections drum



PTH 1200/1000 M

PEZZOLATO, A 360° COMPANY

REALISATION

A continuous R & D program supports Pezzolato's development and manufacturing. Wholly performed in house, own specialised personnel follow every single step up to the delivery of all machines.

COMPONENTS

All hydraulic, electric and electronic components mounted on Pezzolato chippers are supplied exclusively by prime-quality European manufacturers.

ASSISTANCE

Technical assistance is provided quickly and performed by own personnel. Specialised Pezzolato technicians are always available to intervene directly or to support local authorised dealers and service facilities.

SPARE PARTS

Thanks to its large stock, Pezzolato is able to send and deliver any spare parts at customers' premises all over the world, within 24/48 hours.



Feeding hopper and upper roller's total lifting

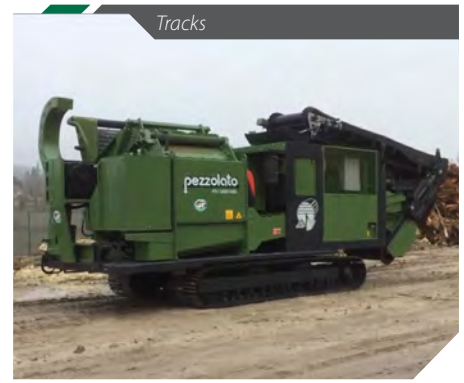


Electronic controller

EXTRAS AND CONFIGURATIONS

Pezzolato SpA cares for its customers' needs and listens carefully to the machine end-users, further being a flexible and versatile company. Pezzolato machines can be customised through a series of extras, i.e.:

- ▼ **Hydraulic ejection fan**, with continuous speed adjustment allows to adjust the rpm according to the real need, thus reducing energy consumption and the production of fines
- ▼ **Rotating discharge belt**, to obtain better quality chips
- ▼ **Sliding frame**, to expand the reach of the crane and speed up wood introduction
- ▼ **Drive-line hopper**, to feed the machine with voluminous material
- ▼ **Rotating thrust block (fifth wheel)**, to feed the machine right or left hand
- ▼ **Hydraulically folding hopper extension**, to easily introduce certain types of wood
- ▼ **Radio remote control** to manage the chipper's main activities at a distance
- ▼ **C-shaped Woodsplitter** with or without chain saw
- ▼ **Automatic greasing system**, drum bearings excluded; if there is a crane the rotor and the grapple are excluded
- ▼ **Tracks** to drive the machine in rough terrains
- ▼ **Hydraulic traction**, for forestry trailers, to easily move the machine in impervious paths
- ▼ **Hook-lift system**
- ▼ **Telescopic legs** enable transportation of the chipping unit on several vehicles
- ▼ **Forestry cranes**, with or without cabin, in customised configuration
- ▼ **Second pump supply** and hydraulic system reshaping for crane actioning by the engine of the machine
- ▼ **Sieving grids** for chip calibration with different sizes, easy to replace
- ▼ **Feeding hopper with hydraulic rollers** to chip logs, minimizing dirt and bark presence in output wood chips
- ▼ **Inspection camera**



"PEZZOLATO CHIPS" ARE CERTIFIED



Chips size and features as produced by Pezzolato drum chippers has been analysed and verified by CNR IVALSA (National Research Council of Italy. Trees and Timber Institute).

PEZZOLATO CUTTING TECHNOLOGY GUARANTEES HIGH QUALITY CHIPS

The cutting system used by Pezzolato consists of a closed stagger sections drum equipped with knives, a counter-blade and a sieving grid with interchangeable calibration.

This system assures the production of quality chips since the closed drum keeps the chips cutting length fixed and constant. The wood undergoing the knife action is transformed into calibrated chips, which can pass through the calibration grid immediately after the cut.

Whatever is the need of the customer, either micro-chips for pellet production or extra large chips for the improvement of the big heaters/boilers performance, Pezzolato knows and offers the best cutting technology, thanks to the deep knowledge in Mechanics and the constant R&D of specific solutions.

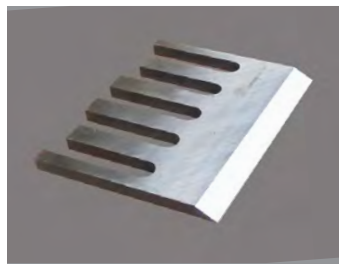
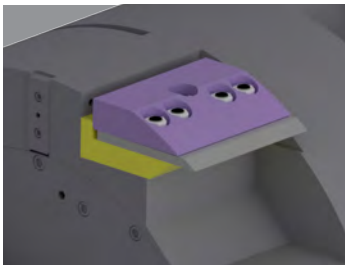


TWO BLADES, MAKE PEZZOLATO

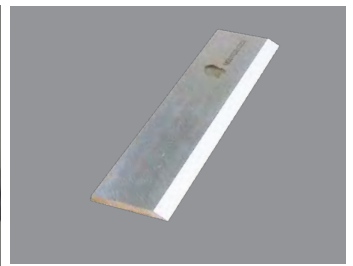
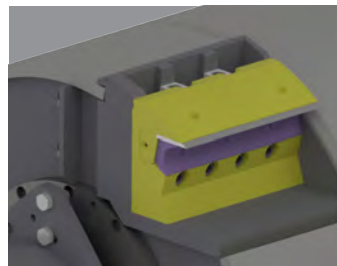
Pezzolato drums can be provided with two different blades:

Standard: the traditional blade that has always been mounted on Pezzolato drum chippers. They are fast and easy to replace, can be sharpened up to 20 times. This configuration is applicable to a special drum for producing extra size chips.

Quick&Smart: provided with a revolutionary fixing system, it is fixed directly to the drum, is easy to handle and quick to replace, it costs 30% less than a traditional blade (to buy and to maintain), it can be sharpened up to 3 times.

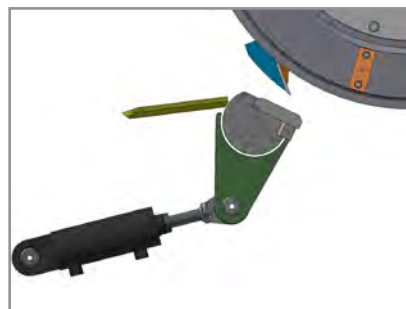


STANDARD BLADE



QUICK&SMART BLADE

PEZZOLATO HYDRAULIC OPENING COUNTER-BLADE



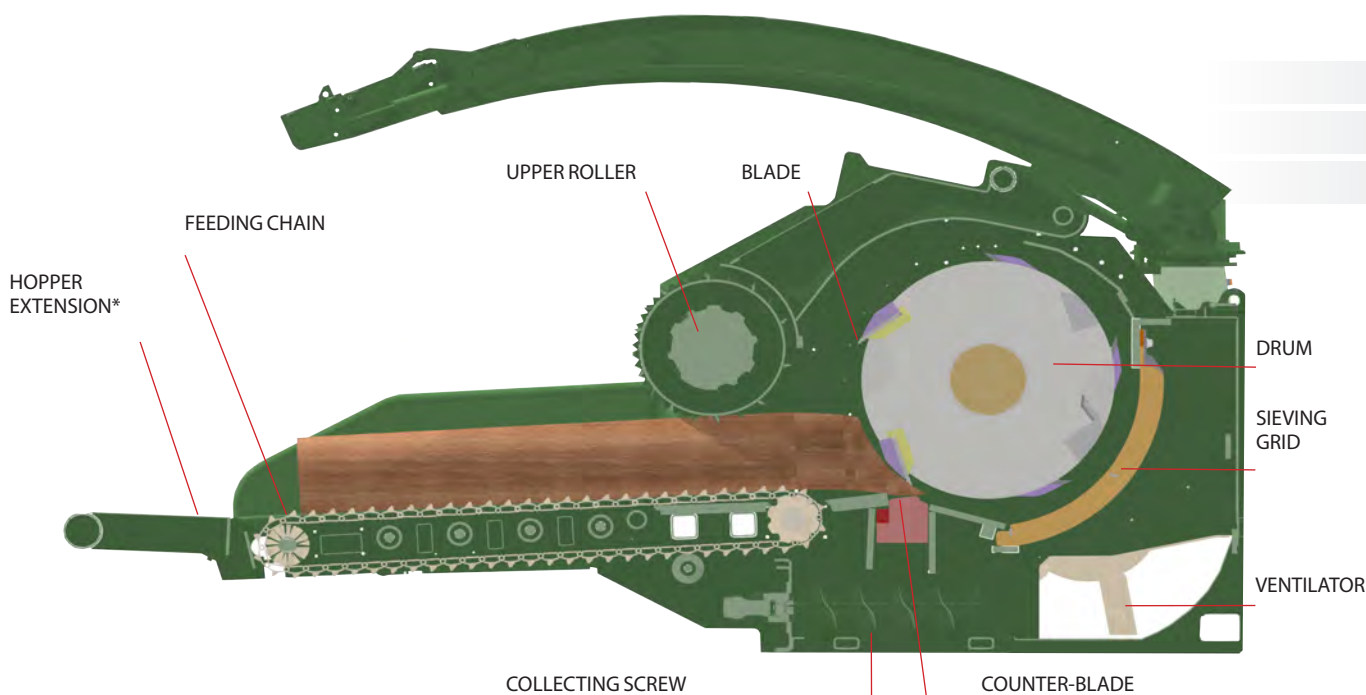
The chipper is equipped with a counter-blade assembled on a semi-spherical guide, fixed to a hydraulic cylinder, connected to a Nitrogen plenum chamber.

Should stones, concrete or metal parts (etc.) enter into the machine, the plenum chamber immediately discharges, so that the counter-blade opens itself giving space to the foreign part. When the counter-knife opens, the supply system inverts and, in case of independent motor, the clutch disengages, thus avoiding problems to the machine.

TECHNICAL FEATURES		PTH 1000/1000	PTH 1200/1000	PTH 1400/1000
Minimum tractor power	Hp/kW	200/147	200/147	-
Maximum tractor power	Hp/kW	520/388	520/388	-
Diesel motor power	Hp/kW	510/379 - 800/597	700/515 - 800/597	800/597 - 1150/858
Maximum chipping diameter (soft wood)	mm	800	800	800
Maximum chipping diameter (hard wood)	mm	550	550	550
Blades	n°	4/8	5/10	5/10
Hourly throughput	m³/h	up to 220	up to 250	more than 300
Drum diameter	mm	1000	1000	1000
Drum width	mm	1000	1200	1400
Feeding chain width	mm	1000	1200	1400
Feeding chain length	mm	2200	2200	2200
Hopper width	mm	1800	2200	2400
Maximum inlet passage	n°	1000 x 1100	1200 x 1100	1400 x 1100
Weight motor machine (std model)*	kg	18500	20000	25000
Weight PTO machine (std model)*	kg	16500	18000	-

*May vary according to the final machine's configuration

*OPTIONAL



Dealer

