



 pezzolato

Drum Chipper **PTH 30.70**

*Drum wood chipper
with big feeding hopper*

GREENLINE

PTH 30.70



PTH 30.70

It's the basic model of the range, however, it is appreciated for the typically robust structure of Pezzolato drum chippers, ensuring reliability and excellent performance.

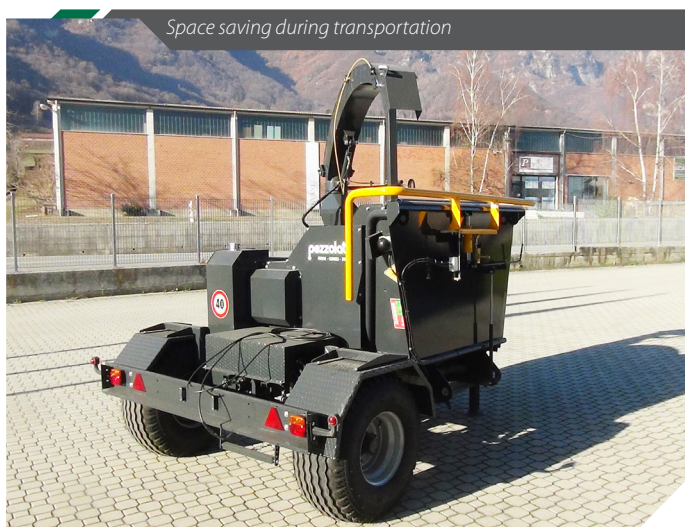
The machine has been designed to ensure for operator the ease of use and to minimize maintenance costs.

The wear parts of all machines are cost effective

and simple to replace in short maintenance times.

Powered by tractor Power Take Off or provided with autonomous diesel engine.

The big hopper, the upper roller of large dimensions and the lower roller facilitate the material's inlet in the chipping apparatus. The machine can be fed either manually or with



Space saving during transportation



Big feeding hopper



PTH 30.70

mechanical means. For manual feeding the chipper is equipped with a robust safety bar that provides safety using the machine.

The cutting system characterized by the closed drum and the sieving grid that is interchangeable depending on the requirements, allow to obtain a uniform and homogeneous wood chips even for the boilers of domestic use.

The fan with a large diameter allows to eject the chips through the discharge pipe fitted, at the end, of adjustable deflector.

The NO STRESS electronic device, supplied as standard, automatically regulates the in-feed of material according to the available power.



Multi-knives system drum



These chippers guarantees the production of calibrated chips

EXTRAS AND CONFIGURATIONS

- NO STRESS electronic device**, available on all standard machines, automatically regulates the in-feed of material according to the available power
- Sieving grids** for chip calibration with different sizes, easy to replace
- Radio or cable remote control**, to manage the chippers main activities at a distance
- Removable security bar**, for hand or crane feeding
- Low- or high-speed towing trailer**, with air or hydraulic brakes
- Forestry cranes**, with or without cabin, in customized configuration
- "M version" machine**, driven by Diesel engine



TECHNICAL DATA		PTH 30.70
Minimum tractor power:	Hp	70
Maximum tractor power:	Hp	130
Diesel engine power:	Hp	126
Maximum inlet passage:	mm	640 x 300
Knives:	n°	3
Maximum chipping diameter*:	mm	300
Drum width:	mm	640
Drum diameter:	mm	520
Upper and lower roller width:	mm	640
Hourly troughthput*:	m ³ /h	18 - 25

* Diameters and declared production are variable according to the available power, wood type and chip size.

